



WHAT TO DO

WHAT'S ON

HISTORY

ATTRACTIONS

ACTIVITIES

EDUCATIONAL VISITS UK DAYS OUT - YORKSHIRE

SPRING 2022



Welcome

Contents

Photo Courtesy of Wildfowl and Wetlands Trust

Welcome to the latest Educational Visits digital magazine bringing you news and updates on what is happening for schools and families in your region during Spring.

Spring will soon be upon us and we hope that this magazine gives you and your family some inspiration of exciting things to do and places to visit on your doorstep. It should also give some inside information on where to find the Easter Bunny! As well as Easter, there are also some great events taking place over the May Half Term holidays and of course, in celebration of the Queen's Platinum Jubilee in early June. Remember to book ahead to avoid disappointment and if you are able, please support your local businesses to help them get back on track. Please feel free to tell friends and colleagues about this publication so that they too are aware of exactly what is happening in your area. We hope you have a fantastic time this Spring.

International Days	3
Visit our Website	4
Wildfowl and Wetlands Trust - Generation Wild Programme	5
Kids Days Out - Events	6-9
Ramadan Experience at Bombay Stores	9
The JORVIK Group	10
School Trips - Bespoke to You	11
Virtual Learning	12



International Days

International Days of Recognition are occasions that help promote discussions on topical issues in schools. Here are a number of International Days taking place over the Winter period to be aware of and it may even be that your school decides to organise activities related to the day.

Spring 2022

World Book Day

3 March - the theme in 2022 follows the message “You Are a Reader,” with a focus on reaching children from disadvantaged backgrounds.

World Wildlife Day (WWD)

3 March - the theme in 2022 is ‘Recovering key species for ecosystem restoration’.

International Women’s Day

8 March - celebrates the achievements of women with an emphasis on women’s equality.

International Day for the Elimination of Discrimination

21 March – commemorated annually on this date in remembrance of the 69 people killed in 1960 at a peaceful anti-apartheid demonstration in South Africa.

World Poetry Day

21 March - recognises that poetry is unique in capturing the creative spirit of the human mind.

International Day of Forests

21 March - the theme in 2022 is ‘Forests and Sustainable Production and Consumption’.

World Health Day

7 April - this global health awareness day draws attention to health concerns all over the world. It is marked on 7 April every year, on the anniversary of the founding of the World Health Organisation (WHO) in 1948.

World Day for Cultural Diversity for Dialogue and Development

21 May - annually celebrates the essential role of intercultural dialogue for ensuring we sustain and achieve peace and development around the world.

World Environment Day

5 June - the theme in 2022 is ‘Only One Earth’ with a focus on living sustainably in harmony with nature.

World Oceans Day

8 June - raises awareness about protecting our oceans and ending overfishing.

VISIT OUR WEBSITE www.educationalvisitsuk.com



Discover an array of museums and places to visits, together with the latest information on our website www.educationalvisitsuk.com.

Updated throughout the year with blogs, educational workshops as well as events and new listings, the www.educationalvisitsuk.com website brings together everything to make planning your next educational adventure effortless. We have combined the website with School Trips UK, our sister site, that offers bespoke school trips, this will make it easier for you to choose whether you want to book and organise your school trip yourself or decide to use our services and let us take the strain of organising and planning your next adventure!

Listings for over 200 attractions and accommodation from all over England and Wales that we think are perfect for school trips or education groups. You will also find more information about each attraction including the key stages/ages catered for and subjects as well as the facilities they have including accessibility.

Direct links to each advertiser's website for ease of booking or making an enquiry.

TripAdvisor ratings for each attraction so you can see what other teachers think before you book.

An active events page which lets you know special events and exhibitions that are going on – check back regularly so as not to miss a thing!

A compelling blog, written by our team with contributions from our advertisers ensures that our articles have the latest news to continually inspire you throughout the year.

www.educationalvisitsuk.com

FREE nature-connection schools programme at Wildfowl and Wetlands Trust



Photos Courtesy of Wildfowl and Wetlands Trust



WWT have recently launched their Generation Wild programme, which will connect 45,000 children and their families with nature. It includes FREE school visits (including FREE transport), FREE visits for families and a specially designed website to encourage continued nature-connection activity at school, at home and in local greenspaces.

Children and their families will find themselves transported by a magical narrative as they meet Ava, a part-bird, part-human creature in a giant nest. Can they help her to find her family, fulfil her destiny and unlock some of nature's wildest secrets along the way?

The programme is now open to schools in disadvantaged areas, with places offered on a first-come-first-served basis. Eligibility criteria (based on % of pupils eligible for free school meals) vary across centres so please visit the Generation Wild website to find your nearest centre and see if your school qualifies.

See www.generationwild.org.uk

The scheme is running at wetland centres across the UK:

Arundel, West Sussex, BN18 9PN

Local Authority Areas Covered: Brighton and Hove, East Sussex, Hampshire, West Sussex

Llanelli, Carmarthenshire, S Wales, SA14 9SH

Local Authority Areas Covered: Bridgend, Caerphilly, Carmarthenshire, Neath Port Talbot, Pembrokeshire, Powys, Rhondda, Cynon, Taf, Swansea, Vale of Glamorgan

Barnes, London SW13 9WT

Bracknell Forest, Brent, Croydon, Ealing, Hammersmith and Fulham, Harrow, Hillingdon, Hounslow, Kingston upon Thames, Lambeth, Merton, Reading, Richmond upon Thames, Slough, Southwark, Surrey, Sutton, Wandsworth, Westminster, Windsor and Maidenhead, Wokingham

Martin Mere, Burscough, Lancashire, L40 0TA

Blackburn with Darwen, Blackpool, Bolton, Bury, Halton, Knowsley, Lancashire Liverpool, Manchester, Oldham, Rochdale, Salford, Sefton, Stockport, Tameside, Trafford, Wigan

Slimbridge, Gloucestershire, GL2 7BT

Bath and North East Somerset, Bristol City of, Cardiff, Gloucestershire, Herefordshire, Monmouthshire, Newport, North Somerset, South Gloucestershire, Swindon, Wiltshire, Worcestershire

Washington, Tyne and Wear, NE38 8LE

County Durham, Darlington, Gateshead, Hartlepool, Middlesbrough, Newcastle upon Tyne North Tyneside, Northumberland, Redcar and Cleveland, South Tyneside, Stockton-on-Tees, Sunderland

Kids Days Out Events

Below is a list of great days out over the coming weeks for Spring events listed by county. Always check the website of the place you are visiting before you go so that you are fully aware of the opening times, booking procedures and any restrictions that may still be in place.



EAST YORKSHIRE

Snowdrops in the Woodland

Until 6 March

Burton Agnes

Rudston Rd, Burton Agnes, Driffeld YO25 4NB

<https://www.burtonagnes.com/>

Lambing Time at Sledmere

26-27 March and 2-3 April

Sledmere House

Sledmere, Driffeld, YO25 3XG

www.sledmerehouse.com

Mysterious Pocklington Ghost Walk

29-30 March

Pocklington Arts Centre (starts here)

22-24 Market Pl, Pocklington, York YO42 2AR

<https://www.pocklingtonartscentre.co.uk>

Easter at Burton Agnes Hall

9-24 April

Burton Agnes

Rudston Rd, Burton Agnes, Driffeld YO25 4NB

<https://www.burtonagnes.com/>

Singin' in the Rain

13-16 April

Hull Truck Theatre

50 Ferensway, Hull HU2 8LB

www.hulltruck.co.uk

Craft Fair

17 April

Sewerby Hall

Bridlington, YO15 1ED

www.sewerbyhall.co.uk

Rapunzel

19 April

Pocklington Arts Centre (starts here)

22-24 Market Pl, Pocklington, York YO42 2AR

<https://www.pocklingtonartscentre.co.uk>

Wind in the Willows

20 April

Bridlington Spa

South Marine Drive, Bridlington, YO15 3JH

www.bridspa.com

The Great British Food Festival

14-15 May

Burton Constable

Skirlaugh, HU11 4LN

www.burtonconstable.com

Vintage Rally

15 May

Burton Agnes

Rudston Rd, Burton Agnes, Driffeld YO25 4NB

<https://www.burtonagnes.com/>

The Wizard of Oz

30 May

Bridlington Spa

South Marine Drive, Bridlington, YO15 3JH

www.bridspa.com

The Queen's Knickers

31 May

Pocklington Arts Centre

22-24 Market Pl, Pocklington, York YO42 2AR

<https://www.pocklingtonartscentre.co.uk>

Craft Fair

5 June

Sewerby Hall

Bridlington, YO15 1ED

www.sewerbyhall.co.uk

NORTH YORKSHIRE

Adventure! Endurance! Extraordinary Seamanship! Survival against the odds!

Until 31 October

Captain Cook Memorial Museum, Whitby

The story begins at the handsome 17th century harbourside house now the Captain Cook Memorial Museum. This is where the great explorer, James Cook, came to serve his apprenticeship in Whitby in the year 1746. It belonged to Cook's master, the Quaker ship owner, Captain John Walker. When the young Cook was not at sea, he lodged here in the attic with Walker's 'other family' of apprentices. Cook's voyages were the 18th century equivalent of today's missions to Mars. For ten years Cook and his crews explored the unknown, uncharted waters of the Pacific, the South Atlantic, and the Arctic Oceans. Danger was ever present. The thought-provoking collection of original paintings and drawings, letters in Cook's own hand, ship models, maps and fascinating objects gathered on the voyages illustrate the Cook story. New special exhibition every year. 2022 - 'Sea Peoples – Navigating the Pacific' describes the ways Polynesians and Europeans overcame the greatest of the world's oceans

Open Daily until 1 April 10.30 – 1500. 2 April – 31 October, 0945 – 1700. Last admission half an hour before closing. Open Mon, Tue and Saturdays in November.

<https://www.cookmuseumwhitby.co.uk/>



Early Evening Cruise

Until 20 November

City Cruises York

Kings Staith, York, YO1 9SN

<https://www.cityexperiences.com/york/city-cruises/early-evening-cruise/>

York City Cruise

Until 25 November

(sailing at multiple times throughout the day)

City Cruises York

Kings Staith, York, YO1 9SN

<https://www.cityexperiences.com/york/city-cruises/york-city-cruise/>

Schools programme 2022

Available now

The Yorkshire Arboretum

Castle Howard, York, YO607BY

www.yorkshirearboretum.org

Stephenson's Rocket learning workshop (KS1)

Offer for Schools

Wednesday – Friday during term time

National Railway Museum

Leeman Road, York YO26 4XJ

<https://www.railwaymuseum.org.uk/>

Under Pressure science show (KS2)

Offer for Schools

Wednesday – Friday during term time

National Railway Museum

Leeman Road, York YO26 4XJ

<https://www.railwaymuseum.org.uk/>

Mallard: The Fastest Steam Engine storytelling (SEND)

Offer for Schools

Wednesday – Friday during term time

National Railway Museum

Leeman Road, York YO26 4XJ

<https://www.railwaymuseum.org.uk/>

Sights and Sounds of Ripon

12 March

Ripon Museums

Sharow View, Allhallowgate, Ripon, HG4 1LE

<https://riponmuseums.co.uk/events/event/sights-and-sounds/>

Malton Monthly Food Market

12 March

Market Place, Malton

<https://www.visitmalton.com/whats-on>

Ray Mears

24 March

Harrogate Royal Hall

Ripon Road, Harrogate HG1 2SY

<https://www.harrogatetheatre.co.uk/whats-on/Ray-Mears-We-Are-Nature>

Medieval Event 1461 Battle of Towton

26-27 March

Bolton Castle

Nr Leyburn, DL8 4ET

www.boltoncastle.co.uk

Easter Adventure

27 March – 18 April

Stockeld Park

The Adventure Park, Stockeld Park, Wetherby, North

Yorkshire, LS22 4AN

www.stockeldpark.co.uk

Easter Trail

2-24 April

Hesketh Farm Park

Bolton Abbey, Skipton, BD23 6HA

www.heskethfarmpark.co.uk

NORTH YORKSHIRE Cont ...

Easter Holidays Activities at Mother Shipton's

2-24 April
Mother Shipton's Cave
Prophecy House, Harrogate Rd, High Bridge, Knaresborough
HG5 8DD

Hop along to Mother Shipton's during the Easter Holidays for an EGG-CEPTIONAL time!

Follow the Bunny Door Trail and look out for giant eggs, CRACKING photo opportunities and fascinating Easter scenes throughout the beautiful woodland. The park will be transformed, creating an engaging Easter event suitable for all the family.

www.mothershipton.co.uk



Opens for Season

From 4 April
North Yorkshire Moors Railway
Pickering and Grosmont Stations
www.nymr.co.uk

Malton Monthly Food Market

9 April
Market Place, Malton
<https://www.visitmalton.com/whats-on>

Easter Egg Hunts

9-24 April
Beningbrough Hall and Gardens
York, YO30 1DD
www.nationaltrust.org.uk/beningbrough-hall-gallery-and-gardens

Easter Eggsravaganza, Family Easter Activities

9-24 April
Pickering Beck Isle Museum
Bridge Street, Pickering, YO18 8DU
<https://www.beckislemuseum.org.uk/>

Studfold Easter Egg Hunt

9-24 April
Studfold Adventure Park, Harrogate
<https://www.studfold.com/>

Pinocchio by Northern Ballet

12-13 April
Harrogate Theatre
Oxford Street, Harrogate, HG1 1QF
<https://www.harrogatetheatre.co.uk/whats-on/Pinocchio-Northern-Ballet>

York Food Chocolate Festival

14 - 18 April
Parliament Street & Shambles Market
www.yorkfoodfestival.com

Peter Rabbit visit

15 April
Thornton Hall Country Park
Thornton-in-Craven, Skipton BD23 3TS
www.thorntonhallcountrypark.co.uk

Strong Women Science

16 April
Harrogate Theatre
Oxford Street, Harrogate, HG1 1QF
<https://www.harrogatetheatre.co.uk/whats-on/StrongWomen-Science>

Easter Eggstravaganza

17-18 April
Thornton Hall Country Park
Thornton-in-Craven, Skipton BD23 3TS
www.thorntonhallcountrypark.co.uk

Harrogate Spring Flower Show

21-24 April
Great Yorkshire Showground
<https://www.flowershow.org.uk/>

Whitby Goth Weekend

22-24 April
Across Whitby
<https://www.whitbygothweekend.co.uk/>

Filey Folk Festival

29 April – 2 May
Filey Evron Centre
<http://fileyfolkfestival.bravesites.com/>

York Walls Festival

30 April – 2 May
York City Centre
www.twitter.com/WallsYork

Tulip Festival

30 April - 14 May
Burnby Hall Gardens
01759 307541
<https://www.burnbyhallgardens.com/>

Heritage Craft Day

9 May
Pickering Beck Isle Museum
Bridge Street, Pickering, YO18 8DU
<https://www.beckislemuseum.org.uk/>

Malton Monthly Food Market

14 May
Market Place, Malton
<https://www.visitmalton.com/whats-on>

Medieval Event – Mary Queen of Scots

14-15 May
Bolton Castle
Nr Leyburn, DL8 4ET
www.boltoncastle.co.uk

Filey Steampunk Weekend

14-15 May
Filey
<https://www.discoveryyorkshirecoast.com/discover/whats-on/filey-steampunk-weekend-2022-p1413401>

Big Ideas by the Sea Environmental/Creative Festival

20 May-3 June
Across Scarborough
<https://www.bigideasbythesea.com/>

Yorkshire Game & Country Fair

21-22 May
Scampston Hall, Malton
<https://www.scampston.co.uk/>

Jubilee Family Fun Trail

27 May-5 June
Kiplin Hall
Near Scorton, Richmond, DL10 6AT
www.kiplinhall.co.uk

JORVIK Viking Festival 2022

28 May-1 June 2022
York
The Vikings are back in York. The Vikings will once again be pitching their tents in central York in May and June with the welcome return of the JORVIK Viking Festival! Join us for five days of living history, hands-on fun, craft workshops and many other favourite activities.

<https://jorvikvikingfestival.co.uk/>



Swaledale Festival 50th Anniversary

28 May-11 June
Across Swaledale
<https://www.swalefest.org/>

The Tiger Who Came To Tea

30 May – 1 June
Harrogate Theatre
Oxford Street, Harrogate, HG1 1QF
<https://www.harrogatetheatre.co.uk/whats-on/The-Tiger-Who-Came-to-Tea>

Malton Food Lovers Spring Festival

3-5 June
Market Place, Malton,
<https://www.visitmalton.com/food-festival-yorkshire>

Super Saturdays Kids Go Free

Saturdays in June
Pickering Beck Isle Museum
Bridge Street, Pickering, YO18 8DU
<https://www.beckislemuseum.org.uk/>

SOUTH YORKSHIRE

Festival of the Outdoors

March
Various venues across Sheffield
<https://www.theoutdoorcity.co.uk/blog/read/2022/01/festival-of-the-outdoors-guide-2022-b187>

Utilita Arena Sheffield

Shows throughout Spring
Address: Broughton Ln, Sheffield S9 2DF
<https://www.utilitaarenasheffield.co.uk/events/search?q=lol>

Sheffield City Hall

Shows throughout Spring
Barker's Pool, Sheffield City Centre, Sheffield S1 2JA
<https://www.sheffieldcityhall.co.uk/events/search?q=star+wars>

Amazelab Steam Club

Selected dates throughout Spring
Cutlery Works
73-101 Neepsend Lane, Sheffield, S3 8AT
www.cutleryworks.co.uk

Sheffield Half Marathon

27 March
Starts Arundel Gate
<https://www.runforall.com/events/half-marathon/sheffield-half-marathon/>

Easter Adventure Quest

2-24 April
Brodsworth Hall and Gardens
B6422, Brodsworth DN5 7XJ
www.english-heritage.org.uk/visit/places/brodsworth-hall-and-gardens

World Snooker Championships

16 April – 2 May
Crucible Theatre
Sheffield City Centre, Sheffield S1 1DA
<https://www.sheffieldtheatres.co.uk/>

Kids Rule! @ May Half Term

28 May-5 Jun
Brodsworth Hall and Gardens
B6422, Brodsworth DN5 7XJ
www.english-heritage.org.uk/visit/places/brodsworth-hall-and-gardens

Sheffield Food Festival

2-5 June
Sheffield City Centre
<https://www.welcometosheffield.co.uk/visit/events/major-events>

WEST YORKSHIRE

Gala Day Exhibition

Until 20 March
National Coal Mining Museum
Caphouse Colliery, New Rd, Overton, Wakefield WF4 4RH
www.ncm.org.uk



Nothern Ballet

Until 18 April (selected dates and theatres)
Bradford St George's Hall
Huddersfield Lawrence Batley Theatre
Leeds Grand Theatre
<https://www.northernballet.com/>

Rachel Kneebone Sculpture: 399 Days

Until 24 April
Yorkshire Sculpture Park
West Bretton, Wakefield WF43 4L
<https://yvsp.org.uk/exhibitions>

Eileen Agar: Angel of Anarchy

Until 7 May
Leeds Art Gallery

Leeds Art Gallery is pleased to announce Eileen Agar: Angel of Anarchy, a major retrospective of the work of Eileen Agar (1899-1991). Developed in partnership with the Whitechapel Art Gallery, London and the Mjellby Konstmuseum, Halmstad, Sweden, this exhibition is the largest presentation of Agar's work to date. Featuring over 100 rarely exhibited paintings, collages, photographs, assemblages and archive material, it celebrates the crucial role Agar played within the development of European twentieth century culture.

The exhibition reveals how throughout her nearly 70-year career, Agar synthesised elements of two of the twentieth century's most significant artistic tendencies: Cubism and Surrealism. The exhibition explores how these early inspirations rapidly developed into her very personal style that offered a moving commentary on society over a period of tremendous social change. Fascinated by classical art, ancient mythologies, the natural world and sexual pleasure, Agar mined these subjects and her own biography for the forms and content that filled her works.

<https://museumsandgalleries.leeds.gov.uk/leeds-art-gallery>

Damien Hurst Sculptures

Until 31 May 2023
Yorkshire Sculpture Park
West Bretton, Wakefield WF43 4LG
<https://yvsp.org.uk/exhibitions>

David Nash, Full Circle

Until 5 June
Yorkshire Sculpture Park
West Bretton, Wakefield WF43 4L
<https://yvsp.org.uk/exhibitions>

Top Secret: From Ciphers to Cyber Security Exhibition

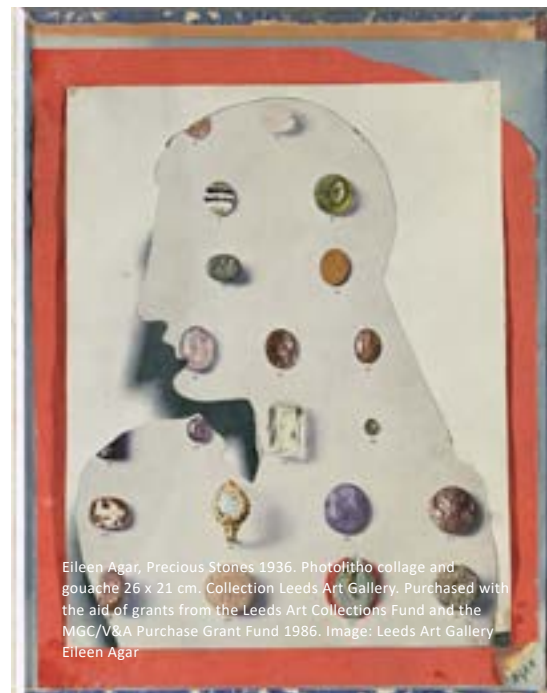
Until 5 June
National Science and Media Museum, Bradford
<https://www.scienceandmediamuseum.org.uk/whats-on/top-secret>

Community display: An NHS Critical Carers project

Until 6 June
Leeds City Museum
Millennium Square, Leeds LS2 8BH
Leeds City Museum's community corridor will host an installation created by NHS critical care staff as part of the 'reset day' programme organised by Leeds Teaching Hospitals NHS Trust. The display will include hundreds of origami butterflies created by NHS staff, as well as a video made by the patients and families affected by covid-19. The reset days were organised to help staff prioritise their own wellbeing after the enormous challenges the teams faced during the pandemic.
<https://museumsandgalleries.leeds.gov.uk/leeds-city-museum/>

Pony Discovery Centre Meets

Until 23 June
National Coal Mining Museum
Caphouse Colliery, New Rd, Overton, Wakefield WF4 4RH
www.ncm.org.uk



Eileen Agar, Precious Stones 1936. Photolitho collage and gouache 26 x 21 cm. Collection Leeds Art Gallery. Purchased with the aid of grants from the Leeds Art Collections Fund and the MGC/V&A Purchase Grant Fund 1986. Image: Leeds Art Gallery Eileen Agar

Money Talks: Stories of people and cash

Until 26 June 2022
Leeds City Museum
Millennium Square, Leeds LS2 8BH

Explore the different forms money takes and the complex relationship we have had with currency over the centuries in the latest exhibition at Leeds City Museum. Money Talks will look at the wide-ranging impact that money has had on people and how it shapes our perceptions. It will raise questions around value and worth, tell stories from across the globe, and discuss more sensitive subjects including gambling and addiction. With our society moving ever closer to being cashless, this exhibition asks what this will mean for physical currency and its impact on culture across the world?

<https://museumsandgalleries.leeds.gov.uk/leeds-city-museum/>



Ephemera advertising 'D Day' – the day English currency changed to decimal. Cadbury's decimal coins, a guide to using decimal and examples of new currency. Courtesy Leeds Museums & Galleries.

Homes of the Gasgoines Display

Until 16 October
Lotherton
Lotherton Lane, Aberford, Leeds, LS25 3EB
<https://museumsandgalleries.leeds.gov.uk/lotherton/>

Curious Creatures: Victorian attitudes to animals

Until 31 December
Abbey House Museum
Abbey Walk, Abbey Rd, Kirkstall, Leeds LS5 3EH

Get ready to meet a gallery of pet lovers, lion tamers, pigeon fanciers, colonial hunters, offal eaters, feather-hat wearers and more at Abbey House Museum. Curious Creatures explores the many ways in which the Victorians interacted with and sometimes exploited animals. Focussing on the period 1810-1914, the exhibition looks at ethical issues about our relationship with nature that are still relevant today.

Objects on display will include taxidermy animals and items made from animal skin or bone. Due to the nature of the exhibition content, visitors may find that they are unsettled whilst uncovering the stories of animal treatment in the Victorian era.

<https://museumsandgalleries.leeds.gov.uk/abbey-house-museum/>

Various Events throughout Spring

Whistlestop Valley
Park Mill Way, Clayton West, Huddersfield, HD8 9XJ
www.whistlestopvalley.co.uk

Various Shows

Throughout Spring
Bradford - Alhambra Theatre, St George's Hall, The Studio
Ilkley - King's Hall
www.bradford-theatres.co.uk

Broadcast 100 Event

Until January 2023
The National Science and Media Museum
Bradford BD1 1NQ
www.scienceandmediamuseum.org.uk

Robert Indiana: Sculpture 1958-2018

12 Mar 22 – 8 Jan 2023
Yorkshire Sculpture Park
West Bretton, Wakefield WF43 4L
<https://yvsp.org.uk/exhibitions>

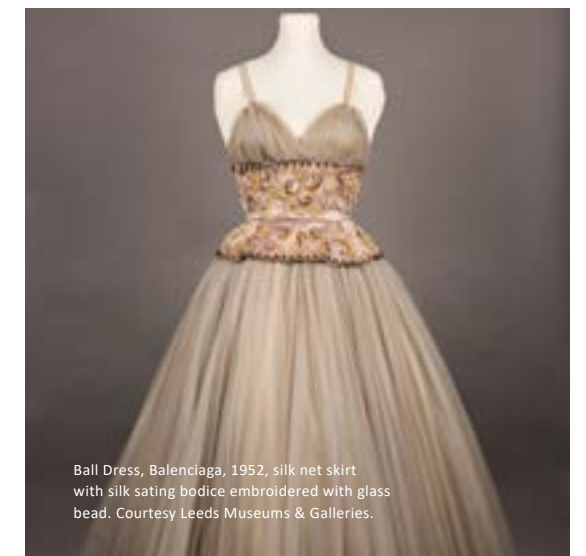
What Shall I Wear: Eveningwear through the ages

1 April – 16 October 2022
Lotherton
Off Collier Lane, Aberford, Leeds LS25 3EB

The return of eveningwear marks a positive and welcome step towards enjoying life at its most fabulous. This year, the fashion galleries at Lotherton will showcase the changing styles, rules and occasions associated with eveningwear and what we consider it to be today.

Pieces on display will showcase traditional and opulent styles, as well as daring and eccentric formal wear, which all celebrate the theatre of dressing up after dusk. Highlights include dresses from John Bates (Jean Varon), Zandra Rhodes, Balenciaga and Norman Hartnell. A key focus of this exhibition also includes a section on re-wearing and will include a film with contemporary views on eveningwear from people of Leeds.

<https://museumsandgalleries.leeds.gov.uk/lotherton/>



Ball Dress, Balenciaga, 1952, silk net skirt with silk sating bodice embroidered with glass bead. Courtesy Leeds Museums & Galleries.

WEST YORKSHIRE Cont ...

Heritage Tour – National Lottery Open Week

19-27 March
The Piece Hall
The Piece Hall, Halifax, HX1 1RE
www.thepiecehall.co.uk

Community display: Kirkstall Lives

May – 31 December 2022
Abbey House Museum
Abbey Walk, Abbey Rd, Kirkstall, Leeds LS5 3EH

This exhibition celebrates the lives of people who have lived, worked and visited the Leeds suburb of Kirkstall. Famous for its dramatic 12th century abbey, the area has long been a thriving community, with generations of families calling Kirkstall home.

From historic institutions including Kirkstall brewery and the Abbey Picture House, to St Stephen's school and the Kirkstall Festival, this exhibition will explore the memories of people who have made Kirkstall a part of their history.

<https://museumsandgalleries.leeds.gov.uk/abbey-house-museum/>

Ikley Carnival

2 May
Ikley
<https://www.ikleycarnival.org/>

Holmfirth Festival of Folk

6-8 May
Holmfirth
<https://www.holmfirthfestivaloffolk.co.uk/>

The North Leeds Food Festival

14-15 May
Roundhay Park, Leeds,
<https://northleedsfoodfestival.co.uk/>

Shepley Spring Festival

20-22 May
Shepley Cricket Club
<https://www.facebook.com/ShepleySpringFestival/>

Haworth 1940's Weekend

21-22 May
Haworth High Street
<https://www.visitbradford.com/>

Great British Food Festival

2-5 June
Harewood House
<https://harewood.org/whats-on/page/3/?event-time=current-future>



A South Asian Ramadan Experience in UK at Bombay Stores

Bombay Stores has been UK's largest Asian departmental store since 1967. It provides the most culturally authentic products and experiences from Asia predominantly India, Pakistan, Indonesia and Bangladesh. The Stores are a full day experience because you never run out of activities. The building includes the main Bombay Store with a cultural clothing department, a modest wear section, an Asian bridalwear shop and an Asian jewellery department. On top of those, the building includes a café/dessert parlour called Mumbai Chai, a restaurant called Mumbai Bites, a beauty salon called beauty hut, an event planning company called Bombay Events and a fabric department with sections for crafts called Bombay Fabrics.

The departmental store really shines during the month of Ramadan. Ramadan is a month of fasting for Muslims and comes around according to the lunar calendar, this year Ramadan starts on the 2nd of April. The end of the month is a little like February, it's evasive and can be 29 or 30 days. The days are determined by the new moon for the next month, if the moon is spotted on 29th, then the fasting stops on 29th, if the moon isn't spotted then the fasting ends on the 30th day. The day after the fasting stops is called Eid.

Eid is an important religious and cultural celebration for the Muslims. In Asian culture Eid is celebrated in a certain way with a mixture of cultural activities and a religious Eid prayer. Bombay stores brings Ramadan and Eid to life by opening doors to the activities. During Ramadan the store opens pop up stalls outside around Iftar (Ending of the fast) and serves food that is popular for breaking a fast, this includes dates, samosas, cold drinks, pakoras (fried vegetarian snack), Kebabs and chicken tikka, etc.

These stalls remain open for the whole month of Ramadan and the store is bustling during the Iftar time which is generally around the second-last Muslim prayer of the day called Maghrib. Many school trips are arranged at the store, and they create small activities around the store for the students and clients. They can learn about Ramadan, how Muslim's fast and how they know when to break the fast. They also have special activities only for students, such as a cultural scavenger hunt, henna demonstration, Sari trying demonstrations, hijab trying demonstrations and dates tasting session.

After the activities the teachers and students can enjoy the food at Mumbai Bites, the restaurant is mainly consistent of Asian treats and the children get a meal and a goody bag from the restaurant. The teachers can contently enjoy their free hot beverages such as Tea or Coffee while the children eat and have a good rest. The staff is friendly and accommodating, they are happy to answer questions about the food as well as other cultural inquiries. There are lamb, beef, chicken, vegan and vegetarian options available. The menu is extensive, and all the treats are delicious, if you ask the staff they can increase or decrease the spice according to your request.

Bombay stores celebrates Eid and Chand Raat (translating to the night of the Moon) which is the day before Eid with a full swing. It's bustling with people queuing for the henna tattoos, Eid clothing, the restaurant and the dessert parlour with their families. People also purchase items from the store celebrating Eid and Ramadan for their children such as prayer cards with decorating activities, build a story style craft box with the story of Makkah (Holy place of Muslim Pilgrimage) and an Advent calendar for the 30 days of Ramadan. The departmental store usually opens at 10am and closes at 7pm, but during Ramadan and Eid it's open until midnight so people who haven't been able to buy clothes for the special occasion of Eid can get some last-minute shopping in.



Bombay stores truly makes this festive season lively and memorable for those celebrating in the UK.

Shearbridge Road Bradford BD7 1NX, 01274 729993 - <https://www.bombaystores.co.uk/>

The JORVIK Group



Spark your pupils' interest and bring history to life with a visit to JORVIK Group attractions. Or invite a historical character into your learning environment!

School Visits - If you're home-schooling or simply trying to encourage a positive learning environment at home for your child, a visit to JORVIK, DIG or Barley Hall is a great way of supporting their development in history, literacy, and science.

Built on the very site where archaeologists discovered over 40,000 Viking-age objects, a visit to JORVIK gives students the opportunity to learn about the real Viking settlement of Jorvik. One of our friendly Viking guides will deliver interactive talks and activities on a variety of Viking topics - where else can you meet a real Viking? Our ride experience transports visitors back to 10th-century York to meet exciting characters, including blacksmiths, traders, weavers, fishermen and their families, before digging deeper and seeing our incredible artefacts up close!

At DIG, you get to discover only the most exciting archaeological artefacts from the 2000 years of history hidden under the streets of York. Our four replica excavation pits are filled with Roman, Viking, medieval and Victorian finds, so you can grab a trowel and dig up the clues that show how people lived in these times.

A school visit to Barley Hall allows pupils to become immersed in life in a wealthy merchant's townhouse in the Middle Ages. Accompanied by our costumed characters, your class will learn about the Snawsell family who lived here towards the end of the medieval period and how the remains of their home were uncovered and restored.

Virtual Outreach

Why not invite a Viking, medieval medic, or friendly archaeologist into your classroom or home learning environment this year? With our live, immersive and interactive sessions, you won't miss out on any of the fun of visiting our attractions, as we have adapted our award-winning school workshops for exclusive access online.

There's a wide range of sessions available: experience a Viking encounter like no other with a bespoke Q&A session; chat with an archaeologist and see finds from York's most important Viking and Roman excavations; or spend some time with a medieval barber-surgeon, who will introduce you to the tools of the trade for medics in medieval York. Plus, new for 2022, you can meet a medieval servant or the townsfolk of York in the time of Richard III or Henry VII!

The virtual outreach encounters are available via Skype, Zoom and Google Meet. We can even include children studying from home, meaning everyone in your class can stay connected as we explore the past together.

New for 2022

Our Loan Boxes Live! offer is new for the Spring term 2022. Connect live to a friendly Viking trader who will explore your Loan Box artefacts with you and your pupils. Your Viking guide will teach your class how to become successful Viking traders - selecting quality items to sell and teaching them how to make a good sale in the Viking marketplace - while also sharing tales of dramatic sea voyages!

Book today by calling 01904 615505 or email schools@yorkat.co.uk

School Trips - Bespoke to You



Photo courtesy of Aerospace Bristol

With over 25 years of experience in the travel industry, our school trips team can help organise your ideal trip. We are proud of our trips and know that whatever the destination we can deliver bespoke packages that will inspire students of all ages.

After we have received your initial enquiry, you will work with one team member from the start to the completion of your trip. Throughout the process your agent will keep you in the loop to ensure you are happy with things every step of the way.

All trips are created to your requirements and can be arranged around specific topics that are relevant to your class. We can include workshops, talks, company visits or other relevant activities to your requirement. Everything for your trip is organised for you by us and personally sourced, from local restaurants to evening activities such as theatre shows or ghost walks.

Before you depart on your trip you will be provided with detailed itineraries, all your booking information, travel maps and walking guides where appropriate and if needed 24-hour emergency contact details.

Check out the sample itineraries on our website for ideas and inspiration. These itineraries are just an illustration of the kind of trip we can organise, whatever you have in mind get in touch to discuss how we can help you plan the perfect school trip.

www.educationalvisitsuk.com/school-trips-and-travel-experiences/

If you have ideas but are not sure how to bring them all together, get in touch and see how we can help make your perfect school trip come to life.

For your free, no obligation quote get in touch:

info@elmtreepress.com

01677 427334

WE INCLUDE:

Transport

Accommodation

Entry to attractions

Evening meals

Packed lunches

FREE teacher places

Information packs

Personal guide on request

Risk assessments

24 hour support



Photo courtesy of UKSA

Virtual Learning



Coming Zoom to a classroom near you

In the last 2 years, Museums and other visitor attractions had to adapt the way in which they are able to ensure that schools could still access learning experiences, especially when they were not allowed to physically visit. Virtual outreach, workshops and learning resources are ways in which learning can be achieved and here is a list of some of the country's museums and attractions offering other ways of learning.

Aerospace Bristol – have a vast array of fun and educational activities & resources to enjoy at home or in the classroom. From making Gliders to learning about the science behind rockets, this is the site to visit. Our particular favourite is making your own Airshow!
<https://aerospacebristol.org/at-home-with-aerospace-bristol>

Barnsley Museums – enjoy a 360 degree tour of the fabulous Experience Barnsley and Can-non Hall Museums.
<https://www.barnsley-museums.com/digital/virtual-exhibitions>

Beamish – The Living Museum – bring classroom learning to life through remote and onsite, immersive experiences for KS1-5.
<https://www.beamish.org.uk/learning/learning-activities/>

Bristol Museums – Offering great school webinars 'Brilliant Bristol Women!' on 8 March and Art and Architecture in ancient Benin. Additionally, they have a popular programmes of sessions for Home Educating Families.
<https://www.bristolmuseums.org.uk/learning/>

Cornish Seal Sanctuary – offer Virtual Workshops tailored to individual Key Stage groups and designed to teach students about environmental issues, habitats and species in a fun way.
<https://sealsanctuary.sealifetrust.org/en/visiting-us/virtual-workshops/>

Jewish Museum – offer award-winning workshops through distance learning. Workshops are based on a guided exploration experience of the unique collection of authentic objects enabling students to have awareness of what it means to be Jewish in Britain today.
<https://jewishmuseum.org.uk/virtual-classrooms/>

Leeds Museums and Galleries – providing online Exhibitions including the Open Minds Exhibition, Podcasts and a vast array of online learning resources and online activities for kids.
<https://museumsandgalleries.leeds.gov.uk/virtual-visit/>

Life Science Centre – the #LifeGoesOnline programme is full of educational activities and fun demonstrations to try at home including Birthday themed challenges, scavenger hunts and science at home fun.
<https://www.life.org.uk/life-goes-online>

Malton Museum – deliver amazing outreach Roman Legacy sessions at schools and provide the ever popular Museum in a box resource to help you create your own class/school museum.
<https://www.maltonmuseum.co.uk/school-groups/>

National Coal Mining Museum for England – can provide 1 hour live workshops for schools including Meet a Miner, Victorian Miner and Rocks and Fossils virtual sessions.
<https://www.ncm.org.uk/learning-hub/>

National History Museum – free for a limited time, the Natural History Museum can be brought into the classroom with live virtual workshops and streamed shows. Workshops run for 45-60 minutes and are particularly suited to KS2 pupils. Topics currently include volcanoes, earthquakes and virtual evolution.
<https://www.nhm.ac.uk/schools/virtual-workshops.html>

National Memorial Arboretum – give access to a multitude of materials available for free to use from home. Also have fantastic online KS2 and KS3 Activity Worksheets. Subjects available include 'Women at work in World War 1' and 'Children in the second world war'.
<https://www.thenma.org.uk/visit-us/plan-your-visit/visiting-for-learning-and-training/learning-from-home>

Observatory Science Centre and Planetarium – the award winning outside the classroom provider, has with everything from wordsearches to the fantastic Night Sky Objects and Seen from Space sections.
<https://www.the-observatory.org/science-at-home>

Scarborough Museums – take virtual tours of Scarborough Art Gallery and the Rotunda Museums.
<https://www.scarboroughmuseumstrust.com/arts-award-at-home/>

Royal Armouries Museum – have a plethora of Learning resources and offer a bookable live digital outreach service for schools that are unable to visit.
<https://royalarmouries.org/learning/?where=LearningResources>

Shakespeare's Globe Theatre – the Education team have workshops, storytelling sessions, CPD and projects that can be delivered for schools online. Full length productions can also be streamed.
<https://www.shakespearesglobe.com/learn/>

Stratford Butterfly Farm – providing downloadable resources to help support learning from home/within schools on the Lifecycle of a Butterfly/Ancient Maya Rainforest Civilisation.
<https://www.butterflyfarm.co.uk/attraction/schools-and-groups>

Tower of London – have a large selection of resources to use in the classroom covering topics like the Tower itself, Walter Raleigh, Elizabeth I, the Stuarts, the Tudors and many more.
<https://www.hrp.org.uk/schools/learning-resources/#gs.eayvc0>

Winchester Science Centre and Planetarium – are now bringing Science to the Classroom with the Ultimate STEM School Takeout. The focus is certainly on learning through fun with workshops and demonstrations designed to spark curiosity in STEM. From Stargazing Guides to Curiosity Challenges, there is something for kids of all ages.
<https://www.winchestersciencecentre.org/>

Coming 7 June 2022

Educational Visits UK Online Summer Magazine

Highlighting events and activities
over the Summer holidays

