



WHAT TO DO  
WHAT'S ON  
HISTORY  
ATTRACTIONS  
ACTIVITIES

# EDUCATIONAL VISITS UK DAYS OUT YORKSHIRE & NORTH EAST

SPRING  
2023







# Welcome

# Contents

Welcome to the latest Educational Visits digital magazine bringing you news and updates on what is happening for schools and families in your region during Spring. We hope that this magazine gives you and your family some inspiration of exciting things to do and places to visit on your doorstep. It should also give some inside information on where to find the Easter Bunny! As well as Easter, there are also some great events taking place over the May Half Term holidays. Remember to book ahead to avoid disappointment and if you are able, please support your local businesses. Please feel free to tell friends and colleagues about this publication so that they too are aware of exactly what is happening in your area. We hope you have a fantastic time this Spring.

The Team at Educational Visits UK

Bring Science to Life	3
2022/23 Educational Visits Guide	4
School Visits with the JORVIK Group	5
Summer Stays at The University of Edinburgh	6
Visit our Website	7
Kids Days Out - Events	8-9
School Trips - Bespoke to You	10
Virtual Learning	11
International Day of Education	12





## Bring Science to Life

**At Life Science Centre, our unique and engaging programme of workshops and story-telling sessions take place in our amazing science centre and lab spaces, and have been designed to reflect current and relevant STEM topics which are linked to the national curriculum.**

From Key Stage 1 through to Post-16, Life provides the ideal environment for all students to flourish. We aim to ignite students' imaginations and inspire a curiosity for science and the world around them; creating a meaningful relationship with science that could last a lifetime.

As well as space, human biology and engineering, students can explore climate change, put their skills to the test and find out more about exciting STEM jobs that could be for them – all with a North East connection.

### Life promises...

- Exciting, relevant, and interactive STEM experiences that cannot be replicated in the classroom, delivered by an inspirational team.
- Hands-on, curriculum-linked practical workshops in fully equipped real labs and making studios.
- An award-winning science centre that injects a fun, extra dimension to your visit to create a memorable, impactful learning experience.
- Relevance to the lives and career aspirations of students – demonstrating real-world applications of science and technology, and highlighting a vast range of careers for all.
- Fuss-free organisation – our team will do all the planning and organising so everything is in place to create a great and safe experience.

**To find out more, visit [life.org.uk/schools](https://life.org.uk/schools)  
To book a workshop or science centre visit,  
call 0191 243 8223.**



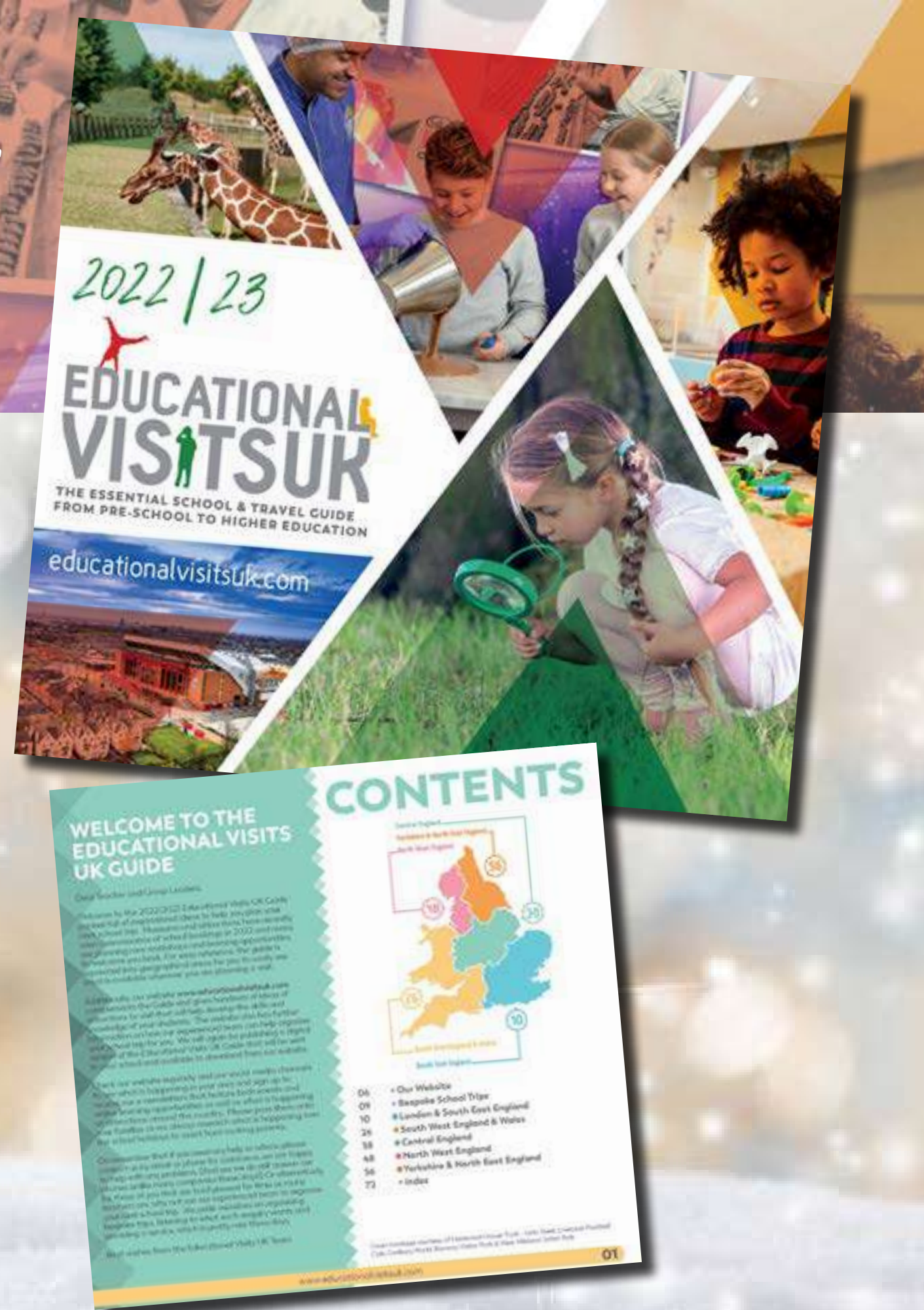
# EDUCATIONAL VISITS UK GUIDE 2022/23

The new Educational Visits UK Guide is now available and you should have received your copy a few weeks ago. Packed full of exciting places to visit there is something to suit everyone whether you are wanting a curriculum-based school trip or some end of term fun.

Our easy to search website [www.educationalvisitsuk.com](http://www.educationalvisitsuk.com) has even more inspiring ideas and places to stay and you can choose to either contact an attraction yourself for more information to plan your own school trip, or use our bespoke service to plan and organise your trip saving you time, money and a lot of frustration! With over 30 years working within the tourism industry and a combined knowledge of over 80 years' experience between us, we pride ourselves in our ability to provide amazing school trips at affordable prices.

*For further copies of the guide please email us on [info@educationalvisitsuk.com](mailto:info@educationalvisitsuk.com) or log on to the website to see the digital version if you need any help and advice on places to visit.*

[www.educationalvisitsuk.com/theguide](http://www.educationalvisitsuk.com/theguide)







# Spark your pupils' interest and bring history to life with a visit to JORVIK Group attractions.

## School Visits

Studying the Vikings this term? Take your pupils on a school trip to JORVIK! Built on the very site where archaeologists discovered over 40,000 Viking-age objects, a visit to JORVIK gives students the opportunity to learn about the real Viking settlement that was once in York. Friendly Viking guides will deliver interactive talks and activities on a variety of Viking topics - where else can you meet a real Viking? The ride experience transports visitors back to 10th-century York to meet exciting characters, including blacksmiths, traders, weavers, fishermen and their families, before digging deeper and seeing incredible artefacts up close!

At DIG, kids get to discover only the most exciting archaeological artefacts from the 2000 years of history hidden under the streets of York. Four replica excavation pits are filled with Roman, Viking (see if you can spot any of the artefacts on display at JORVIK!), medieval and Victorian finds, so they can grab a trowel and dig up the clues that show how people lived in these times. Owned by the same archaeologists who discovered the Viking-age city and created JORVIK Viking Centre, DIG offers you a unique archaeological adventure to get you on your way to becoming a real archaeologist.

A school visit to Barley Hall allows pupils to become immersed in life in a wealthy merchant's townhouse in the Middle Ages. Accompanied by our costumed characters, your class will learn about the Snawsell family who lived here towards the end of the medieval period and how the remains of their home were uncovered and restored and what life was like for both the family and the servants living in a wealthy merchant's townhouse in the Middle Ages.

A visit to [JORVIK](#), [DIG](#) or [Barley Hall](#), is a great way of supporting your pupil's development in history, literacy, and science. You can also complement your visit to JORVIK Group attractions with fun and interactive workshops covering topics from Shakespearean plays (perfect for KS1!) or Viking traders (ideal for KS2!).

## Virtual Outreach

Can't visit in person? With JORVIK Group Virtual Outreach you can invite a Viking, medieval medic, or friendly archaeologist into your classroom! Get in touch to find out about our wide range of sessions available, from a bespoke Q&A session with a Viking to a chat with a medieval barber-surgeon, who will introduce you to the tools of the trade for medics in medieval York.

Plus, you can combine digital and tactile learning with the new Loan Boxes Live! offer. Explore a selection of real and replica artefacts with a friendly Viking trader or Tudor servant via videoconferencing to hear first-hand how these objects were used in the past.

"Using the live loan box with the children was such a positive experience. The children had the opportunity to become proper historians and immerse themselves in the learning. It made the history become less of just a "narrative" and more of an exploration of the past by using key history skills." - Year 5 teacher, West Yorkshire

## Get in touch

JORVIK Group websites are packed full of information about options for teachers, from school trips and souvenir packs to virtual outreach and loan boxes. You can also email their Schools team ([schools@yorkat.co.uk](mailto:schools@yorkat.co.uk)) or call the reservations team (01904615505) who are happy to help!



# EXPLORE SCOTLAND

## With Summer Stays at the University of Edinburgh



Summer Stays at the University of Edinburgh offers a campus lifestyle to educational and sports groups seeking facilities to sleep, eat, learn and train. Located at the foot of Arthur's Seat – the city's iconic ancient volcano – it is within easy walking distance of the Old Town and the main educational attractions. With ample coach parking and 24-hour security and reception, the university's Pollock Estate gives school groups an ideal base to explore all that Scotland's capital has to offer.

From early June to the beginning of September, the student campus transforms itself into the largest hotel in Scotland. With 2,000+ beds available, it can cater for all budgets and accommodation needs. Spread across eight buildings, Summer Stays offers twin and single bedrooms. Over 950 are fitted with ensembles, and the remaining rooms share bathrooms. Accessible buildings and rooms are available, which can be adapted to suit students with disabilities.

The estate offers a variety of meeting spaces, available to be hired for socialising, teaching, physio rooms, or to serve as an office. There is also an onsite shop which offers snacks, sandwiches, and soft drinks.

Breakfast is served in the 650-seater JMCC Restaurant and is included in all stays. Self-service lunch and dinner are available to book, so your group can be accommodated on a DBB or full-board basis. With experience in maintaining athletes' dietary requirements, the chefs are able to cater for all special requests. On days when you are exploring or have an early morning, all meals can be packed and ready to go.

Pollock Estate is an ideal location for those looking for natural areas to explore, as well as proximity to state-of-the-art sport facilities. The estate has its own, brand new 'Oxygen' fitness studio with Technogym equipment and is close to The University's Sports & Exercise complex, with its impressive gyms, pool, squash courts, climbing walls & more. It will only take you 25 minutes to walk to The University's Peffermill Playing Fields with some of the finest sports pitches in Scotland.

There is plenty of outdoor space at the estate – brilliant for a bit of downtime in the fresh air. Adding to that, Holyrood Park is right on your doorstep: it's the largest green space in Edinburgh (650 acres!), with an extinct volcano and lochs, as well as medieval ruins and historical attractions dating back to the Bronze Age for your group to explore.

In the city itself, your students can visit the world-famous castle with its collection of museums, learn about the history of our planet and cosmos at Dynamic Earth, or visit Edinburgh Zoo - home to UK's only giant pandas. There are plenty of options when you stay with the University of Edinburgh.

To discuss your requirements and find out more,  
please email [group.reservations@ed.ac.uk](mailto:group.reservations@ed.ac.uk)  
or call 0131 651 2189



# VISIT OUR WEBSITE [www.educationalvisitsuk.com](http://www.educationalvisitsuk.com)



Discover an array of museums and places to visits, together with the latest information on our website [www.educationalvisitsuk.com](http://www.educationalvisitsuk.com).

Updated throughout the year with blogs, educational workshops as well as events and new listings, the [www.educationalvisitsuk.com](http://www.educationalvisitsuk.com) website brings together everything to make planning your next educational adventure effortless. We have combined the website with School Trips UK, our sister site, that offers bespoke school trips, this will make it easier for you to choose whether you want to book and organise your school trip yourself or decide to use our services and let us take the strain of organising and planning your next adventure!

Listings for over 200 attractions and accommodation from all over England and Wales that we think are perfect for school trips or education groups. You will also find more information about each attraction including the key stages/ages catered for and subjects as well as the facilities they have including accessibility.

Direct links to each advertiser's website for ease of booking or making an enquiry.

TripAdvisor ratings for each attraction so you can see what other teachers think before you book.

An active events page which lets you know special events and exhibitions that are going on – check back regularly so as not to miss a thing!

A compelling blog, written by our team with contributions from our advertisers ensures that our articles have the latest news to continually inspire you throughout the year.

[www.educationalvisitsuk.com](http://www.educationalvisitsuk.com)





# Kids Days Out Events

Below is a list of great days out over the coming weeks for Spring events listed by date. Always check before making a special journey in case anything changes.

## Tour and Mini Easter Egg Rolling/Easter Masterclass

Selected dates until 9 April  
York's Chocolate Story  
<https://www.yorkschocolatestory.com/events/tour-and-mini-easter-egg-rolling/>

## Giant Leaps Experience

Until 4 June  
Science and Media Museum  
<https://www.scienceandmediamuseum.org.uk/whats-on?page=0>

## Hew Locke The Procession

Until 11 June  
Baltic Centre for Contemporary Art  
<https://baltic.art/whats-on/vg-hew-lockethe-procession/>

## British Science Week

11-19 March  
Locomotion Shildon  
<https://www.locomotion.org.uk/whats-on>

## Myth Quest: Monsters and Mortals

25 March- 3 September  
Great North Museum  
<https://greatnorthmuseum.org.uk/whats-on>

## Beamish Steam Gala

1-2 April  
Beamish Living Museum  
<https://www.beamish.org.uk/whats-on/>

## Tynemouth Egg-arium

1-16 April  
Tynemouth Aquarium  
<https://www.tynemouthaquarium.co.uk/events-experiences/upcoming-events/>

## Ormesby Hall Easter Egg Hunt

1-16 April  
Ormesby Hall  
<https://www.nationaltrust.org.uk/visit/north-east/ormesby-hall>

## Medieval Easter

1-16 April  
Royal Armouries Museum  
<https://royalarmouries.org/venue/royal-armouries-museum/>

## Wild about Lotherton

1-16 April  
Lotherton Hall  
<https://museumsandgalleries.leeds.gov.uk/lotherton>

## Easter Holidays: Silly Sheep Roundup

1-16 April  
Kirkstall Abbey  
<https://museumsandgalleries.leeds.gov.uk/whats-on/>

## Easter Holidays at Temple Newsam

1-16 April  
Temple Newsam  
<https://museumsandgalleries.leeds.gov.uk/whats-on/>

## LEGO Exhibition

1-16 April  
Paxton House, Berwick upon Tweed  
<https://paxtonhouse.co.uk/events/>

## The Giant Easter Egg Hunt

1-17 April  
RHS Harlow Carr  
<https://www.rhs.org.uk/gardens/harlow-carr/whats-on>

## Spring Trail

1 April - 14 May  
Paxton House, Berwick upon Tweed  
<https://paxtonhouse.co.uk/events/>

## Easter Holidays: Bunny Fun

4-16 April  
Abbey House Museum  
<https://museumsandgalleries.leeds.gov.uk/whats-on/>

## Trails and Tails: The Grufallo

5 April  
Danby Lodge National Park Centre  
[https://www.northyorkmoors.org.uk/visiting/whats-on/events?SQ\\_VARIATION\\_113868=0](https://www.northyorkmoors.org.uk/visiting/whats-on/events?SQ_VARIATION_113868=0)

## York Food Chocolate Festival

6-10 April  
Parliament Street & Shambles Market  
[www.yorkfoodfestival.com](http://www.yorkfoodfestival.com)

## Easter Sandcasting: Egg, Bird, Hedgehog or Car

6 and 10 April  
National Glass Centre, Sunderland  
<https://sunderlandculture.org.uk/our-venues/national-glass-centre/>

## Easter Celebrations

7-10 April  
Beamish Living Museum  
<https://www.beamish.org.uk/whats-on/>

## International Jousting Competition

7-10 April  
Royal Armouries Museum  
<https://royalarmouries.org/venue/royal-armouries-museum/>

## Missing Bird and Dragon Eggs Trails

7-17 April  
Danby Lodge National Park Centre  
[https://www.northyorkmoors.org.uk/visiting/whats-on/events?SQ\\_VARIATION\\_113868=0](https://www.northyorkmoors.org.uk/visiting/whats-on/events?SQ_VARIATION_113868=0)

## York Model Railway Fair

8-10 April  
York Racecourse  
<https://www.yorkracecourse.co.uk/>

## Gawthorpe World Coal Carrying Championships

10 April  
Ossett, Wakefield  
<https://experiencewakefield.co.uk/event/world-coal-carrying-championship/>

## Banff Mountain Film Festival

21-23 April  
York Barbican  
<https://www.yorkbarbican.co.uk/>

## St George Weekend

22-23 April  
Lotherton Hall  
<https://museumsandgalleries.leeds.gov.uk/lotherton>

## Weardale Railway Food Festival Trains

22-23 April  
Weardale Railway  
<https://weardale-railway.digitickets.co.uk/category/45917>

## Sci-Fi Scarborough 2023

22-23 April  
Scarborough Spa  
<https://scifiscarborough.co.uk/>





**Tulip Festival**

22 April- 6 May  
Burnby Hall

<https://www.burnbyhallgardens.com/events/>

**York Fashion Week**

27 April – 1 May  
Citywide

<https://www.yorkfashionweek.com/>

**Tomorrow's Ghost Festival**

28-29 April  
Whitby Pavilion

<https://www.tomorrowghostsfestival.co.uk/>

**Whitby Goth Weekend**

28-30 April  
Whitby

<https://www.whitbygothweekend.co.uk/>

**Discovery brick Show: LEGO Weekend**

29-30 April  
Discovery Museum, Newcastle

<https://discoverymuseum.org.uk/whats-on>

**York Walls Festival**

29 April – 1 May 2022  
York City Centre

[www.twitter.com/WallsYork](http://www.twitter.com/WallsYork)

**Word Fest**

1-31 May  
Wakefield

<https://www.wakefield.gov.uk/libraries-and-local-history/wordfest>

**Festival of the Rose**

1 May-5 June  
Roman Army Museum

<https://www.vindolanda.com/Event/rosalia-festival-of-the-rose>

**Ilkley Carnival**

1 May  
Ilkley

<https://www.ilkleycarnival.org/>

**We'll Meet Again**

6-7 May  
Yorkshire Air Museum

<https://yorkshireairmuseum.org/plan-your-visit/events/>

**Coronation Weekend**

6-8 May  
Beamish Living Museum

<https://www.beamish.org.uk/whats-on/>

**North Leeds Food Festival**

13-14 May  
Roundhay Park

<https://northleedsfoodfestival.co.uk/>

**Big Ideas by the Sea Festival**

19 May-2 June  
Scarborough

<https://www.bigideasbythesea.com/>

**Haworth 1940s Weekend**

20-21 May  
Haworth

<https://www.visitbradford.com/whats-on/haworth-1940s-weekend-p1628621>

**Whitby Fish and Ships Festival**

20-21 May  
Across Whitby

<https://www.facebook.com/WhitbyFishandShips>

**Bridlington Kite Festival**

20-21 May  
Sewerby Fields

<https://www.bridlingtonkitefestival.co.uk/>

**Malton Spring Food Lovers Festival**

27-28 May  
Malton

<https://www.visitmalton.com/food-festival-yorkshire>

**The Yorkshire Highwayman re-enactment**

27-28 May  
Skipton Castle

<https://www.skiptoncastle.co.uk/events.asp?page=7>

**Walkfest**

27-29 May  
North York Moors

<https://www.northyorkmoors.org.uk/visiting/enjoy-outdoors/walking/walking-festival>

**Multicultural Food Festival**

27-29 May  
Lotherton

<https://museumsandgalleries.leeds.gov.uk/whats-on/>

**Swaledale Festival**

27 May-10 June  
Across Swaledale

<https://www.swalefest.org/>

**May Half Term: Around the World in 80 Days**

28 May-5 June  
Lotherton

<https://museumsandgalleries.leeds.gov.uk/whats-on/>

**York Pride**

1 June  
Citywide

[www.yorkpride.org.uk](http://www.yorkpride.org.uk)

**Leeds Wool Festival**

3 June

Leeds Industrial Museum

<https://museumsandgalleries.leeds.gov.uk/whats-on/>

**York Festival of Ideas**

3 -16 June  
Citywide

[www.yorkfestivalofideas.com](http://www.yorkfestivalofideas.com)

**Filey Food Festival**

10-11 June  
Filey

<https://www.facebook.com/FileyFoodDrinkFestival/>

**Bold as Brass**

17 June

National Coal Mining Museum

<https://www.ncm.org.uk/whats-on/>

**York Proms Picnic Concert**

18 June

York Museum Gardens

[www.yorkproms.com](http://www.yorkproms.com)

**Monster Trucks Event**

18 June

Thornton Hall Country Park

<https://thorntonhallcountrypark.co.uk/>







# School Trips - Bespoke to You

With over 25 years of experience in the travel industry, our school trips team can help organise your ideal trip. We are proud of our trips and know that whatever the destination we can deliver bespoke packages that will inspire students of all ages.

After we have received your initial enquiry, you will work with one team member from the start to the completion of your trip. Throughout the process your agent will keep you in the loop to ensure you are happy with things every step of the way.

All trips are created to your requirements and can be arranged around specific topics that are relevant to your class. We can include workshops, talks, company visits or other relevant activities to your requirement. Everything for your trip is organised for you by us and personally sourced, from local restaurants to evening activities such as theatre shows or ghost walks.

Before you depart on your trip you will be provided with detailed itineraries, all your booking information, travel maps and walking guides where appropriate and if needed 24-hour emergency contact details.

Check out the sample itineraries on our website for ideas and inspiration. These itineraries are just an illustration of the kind of trip we can organise, whatever you have in mind get in touch to discuss how we can help you plan the perfect school trip.

[www.educationalvisitsuk.com/school-trips-and-travel-experiences/](http://www.educationalvisitsuk.com/school-trips-and-travel-experiences/)

If you have ideas but are not sure how to bring them all together, get in touch and see how we can help make your perfect school trip come to life.

For your free, no obligation quote get in touch:

[info@elmtreepress.com](mailto:info@elmtreepress.com)

01677 427334

## **WE INCLUDE:**

- Transport
- Accommodation
- Entry to attractions
- Evening meals
- Packed lunches
- FREE teacher places
- Information packs
- Personal guide on request
- Risk assessments
- 24 hour support





# Virtual Learning



## Coming Zoom to a classroom near you

Online learning and virtual workshops are a great way for schools to access flexible, personalised learning experiences, especially if they are unable physically visit. Here is a list of some of the country's finest museums and attractions offering ways of learning that can mean reduced costs for schools and repeated access to course materials.

**The Food Museum** - the Museum has over 40,000 items in their collection to browse, each one with its own fascinating story. From wartime recipe cards to Victorian steam traction engines, there's always something new to discover at the Food Museum.

<https://foodmuseum.org.uk/collections-overview/>

**Jewish Museum** – offer award-winning workshops through distance learning. Workshops are based on a guided exploration experience of the unique collection of authentic objects enabling students to have awareness of what it means to be Jewish in Britain today.

<https://jewishmuseum.org.uk/virtual-classrooms/>

**Jodrell Bank Science Centre, Planetarium & Arboretum** – as well as the multitude of Jodrell YouTube videos of the telescopes in action, you can explore some the different types of radio telescopes online and look at some of the Science Centre's areas of research.

<https://www.jodrellbank.net/explore/science/the-science-of-jodrell-bank/>

**Leeds Museums and Galleries** – providing online Exhibitions including the Open Minds Exhibition, Podcasts and a vast array of online learning resources and online activities for kids.

<https://museumsandgalleries.leeds.gov.uk/virtual-visit/>

**Life Science Centre** – the #LifeGoesONline programme is full of educational activities and fun demonstrations to try at home including Birthday themed challenges, scavenger hunts and science at home fun.

<https://www.life.org.uk/life-goes-online>

**Monkey World - Ape Rescue Centre** – the Education team are now reaching schools and groups across the country with virtual tours and talks. Using video conferencing software, they will deliver lessons or take you on a guided tour of the park – all without you leaving the comfort of your classroom.

<https://monkeyworld.org/visit-the-centre/education/outreach/>

**Museum of Oxford (MOX)** – The only museum to focus on telling the stories of people past and present from Oxford, take a look at some of the new objects on display in the Museum including bank notes, wall paintings and police helmets! The Museum also has a MOX Podcast that is well worth a listen to.

<https://museumofoxford.org/collection>

**National Coal Mining Museum for England** – can provide 1 hour live workshops for schools including Meet a Miner, Victorian Miner and Rocks and Fossils virtual sessions.

<https://www.ncm.org.uk/learning-hub/>

**National Memorial Arboretum** – give access to a multitude of materials available for free to use from home. Also have fantastic online KS2 and KS3 Activity Worksheets. Subjects available include 'Women at work in World War 1' and 'Children in the second world war'.

<https://www.thenma.org.uk/visit-us/plan-your-visit/visiting-for-learning-and-training/learning-from-home>

**The Roman Baths** - Join an expert from the Roman Baths and head on a Roman adventure! This session is suited for children aged 7-11 and studying the National Curriculum.

<https://www.romanbaths.co.uk/virtual-learning>

**Royal Armouries Museum** – have a plethora of Learning resources and offer a bookable live digital outreach service for schools that are unable to visit.

<https://royalarmouries.org/learning/?where=LearningResources>

**Shakespeare's Globe Theatre** – the Education team have workshops, storytelling sessions, CPD and projects that can be delivered for schools online. Full length productions can also be streamed.

<https://www.shakespearesglobe.com/learn/>

**Stratford Butterfly Farm** – providing downloadable resources to help support learning from home/ within schools on the Lifecycle of a Butterfly/Ancient Maya Rainforest Civilisation.

<https://www.butterflyfarm.co.uk/attraction/schools-and-groups>

**Winchester Science Centre and Planetarium** – are now bringing Science to the Classroom with the Ultimate STEM School Takeout. The focus is certainly on learning through fun with workshops and demonstrations designed to spark curiosity in STEM. From Stargazing Guides to Curiosity Challenges, there is something for kids of all ages.

<https://www.winchestersciencecentre.org/learning>



# English Language Day

## 23 April 2023

**Did you know?**  
Nearly 2 billion people speak  
English in the world (that is  
nearly 1 in 4)

The United Nations (UN) English Language Day is celebrated on 23 April, playwright Shakespeare's birthday and date of death, and is designed to raise awareness of the achievements, history and culture of English language. English is one of 6 official languages of the United Nations alongside Arabic, Chinese, French, Russian and Spanish and by having UN Language days, it is also a way of the UN promoting equal use of all six languages.

Modern English is widely considered to be the 'lingua franca'. This means that it is the language that is usually adopted as a common language between people whose native languages are not English but different.

*William Shakespeare had such an impact on the English language that you may use hundreds of words and phrases that you didn't know never existed before the playwright put pen to paper. Here are some that you may recognise.*

*faint-hearted  
love is blind  
green eyed monster  
fight fire with fire  
gossip  
wear your heart on your sleeve  
send him packing  
the world is my oyster  
fashionable  
vanish into thin air  
break the ice  
lonely*

### UN Language Days

Arabic language day	18 December
French language day	20 March
Chinese language day	20 April
Spanish language day	23 April
Russian language day	6 June



# Coming Summer 2023

**Educational  
Visits UK  
Online Magazine**  
Highlighting events  
and activities  
for the Summer Holidays  
up to September

